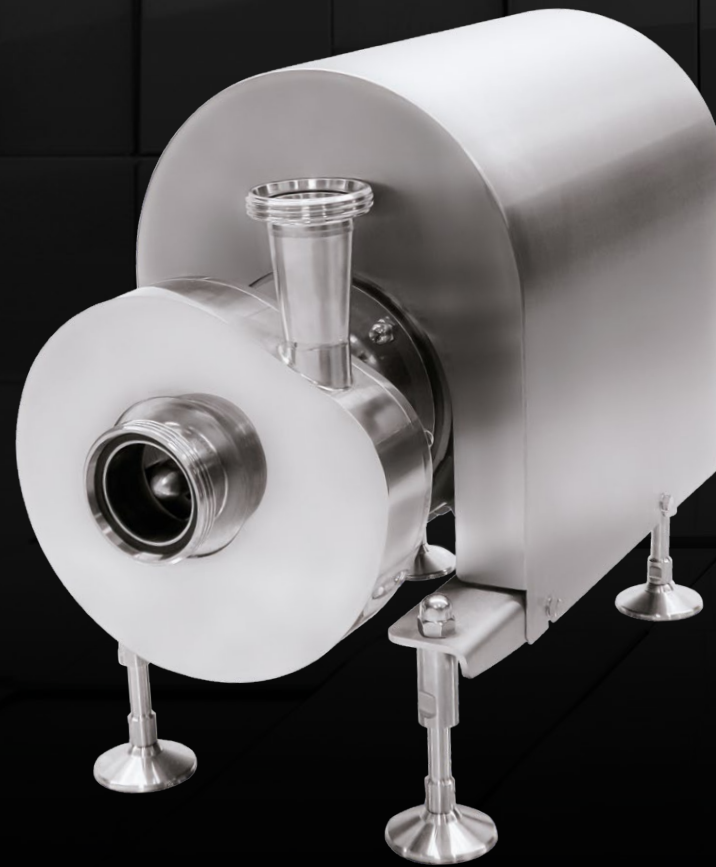


Centrifugal Pump Aqueous Hygienic Design

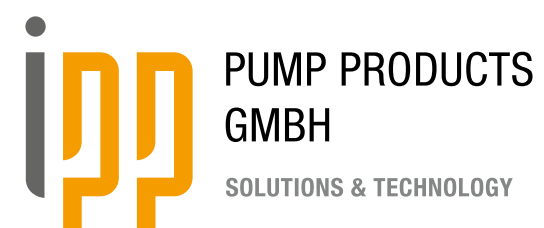


Comprehensive product information
is available on our website
www.pump-products.de and
feel free to contact us.

We will develop the right solution
for you!



Our products comply with EC 1935/2004, EC 2023/2006 and EU 10/2011.



The Aqueous Stability made in Germany.



The coherent concept of the hygienic centrifugal pump Aqueous offers robust and durable operation in all applications. The complete machining of all parts from rolled material - including the impeller - is the basis for maximum stability, flexibility and high, consistent quality. This design is insensitive to unexpected disturbances, such as pressure surges.

The modular design of the pump and mechanical seal ensures non-stop availability and a wide range of equipment options for customisation to meet the most difficult requirements. The use of stainless steel 1.4404 and 1.4435 as well as FDA-compliant seals in areas in contact with the product are standard for us.

The basic performance features are:

- Flow rates up to 300 m/h
- Delivery heads up to 120 m
- Temperatures up to 150 °C
- Pressure rating PN16

The Aqueous is therefore also ideally suited for CIP and SIP cleaning processes. Other requirements, such as higher pressure levels, are possible on request.

Full machining:

To get the maximum performance out of the ipp pumps, the individual parts are fully machined from rolled material. The resulting stability ensures extremely smooth running, protects the bearings and mechanical seal and thus maximises the service life. The machined surfaces in contact with the product already offer roughness values of $Ra \approx 0.8 \mu m$ as standard.

A surface finish of up to $Ra \leq 0.4 \mu m$ can be achieved, with or without electropolishing, as required. At the same time, there is no dependency on semi-finished castings and sheet metal products, promising maximum flexibility in terms of material selection and geometric requirements in order to meet the customer's needs in the shortest possible time. The development of a nozzle approach enables a rotationally symmetrical butt weld seam, which minimises the risk of defects in line with our philosophy. Functional and visually perfect weld seams are the result. These important factors have been derived from many years of experience with high-quality rotary lobe pumps.

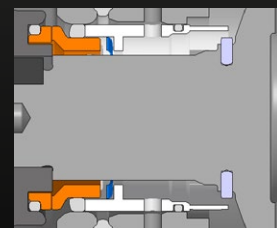
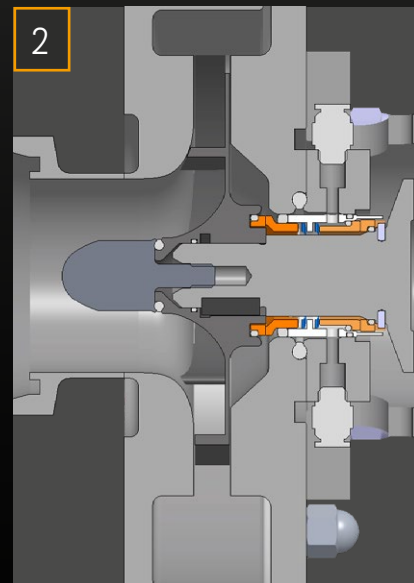
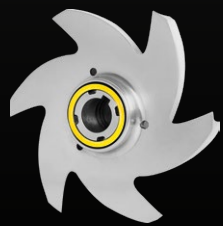
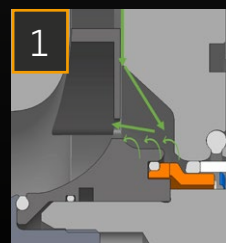
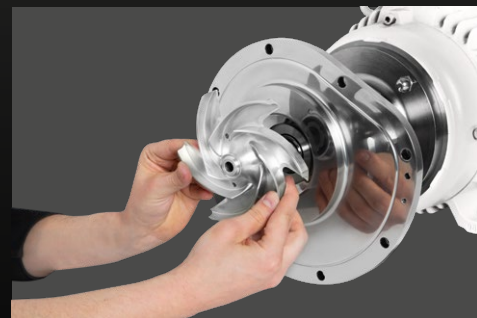
Connections:

All available connection standards can be implemented at the customer's request. DIN 11851 dairy pipe thread and TriClamp DIN 32676 are common, but other connections, such as DIN 11864 and DIN EN 1092-1, are also possible. Pipe dimensions of various standards can be selected.

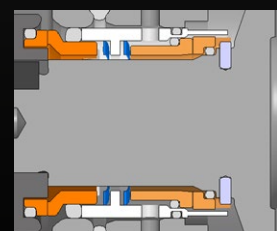
Options:

- Large heat exchangers (heating/cooling)
- Drainage connection for complete drainability
- Customised adaptation of the connection dimensions
- Comprehensive documentation

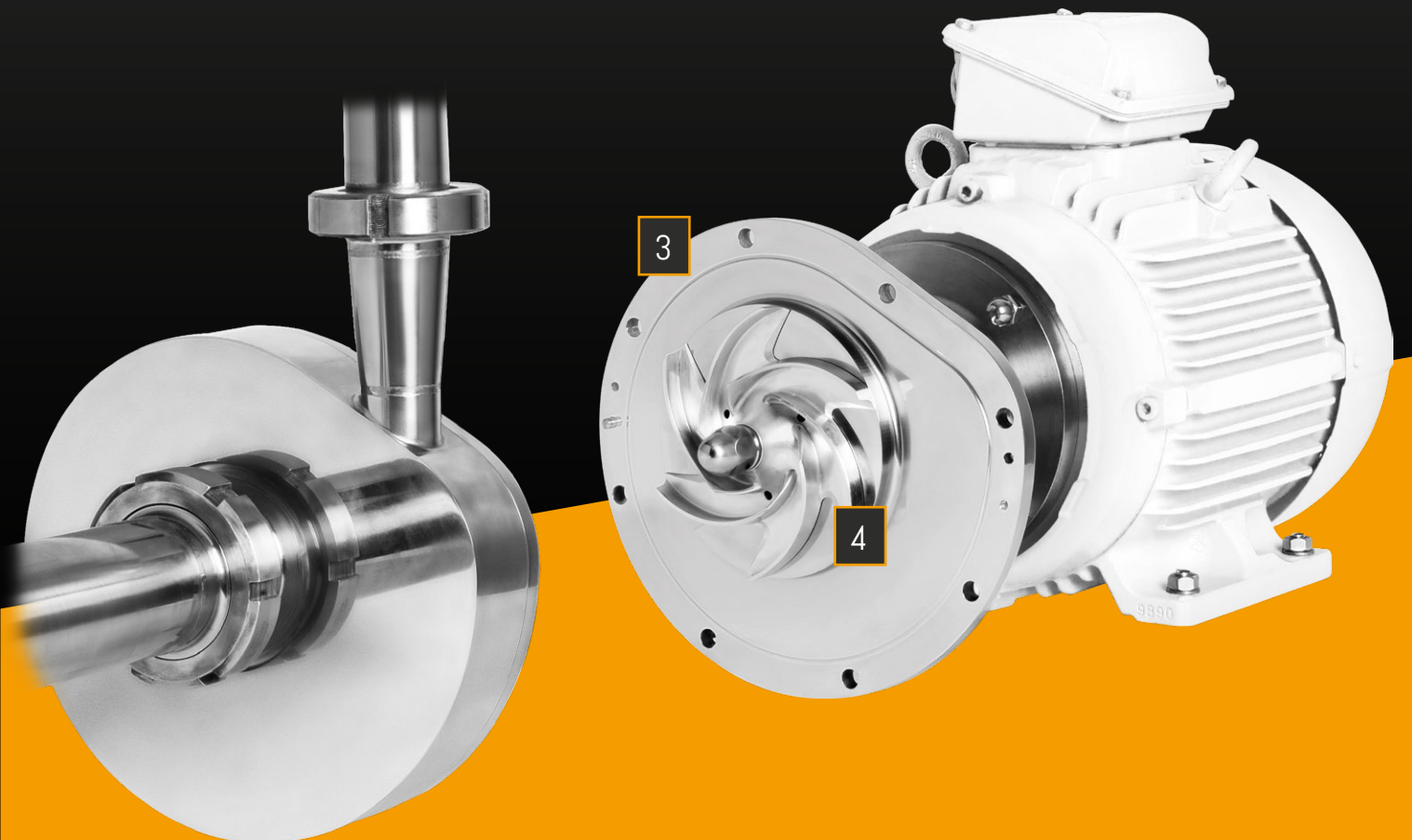
- 1 CIP/SIP residue-free cleaning thanks to hygienic design and O-rings pressed without dead space (FDA as standard; USP class VI and other requirements possible).
- 2 The mechanical seal integrated in the impeller is the prerequisite for maximum hygiene, maximum pump performance and uncritical temperature behaviour. Access from the front promises short maintenance intervals and also increases machine availability. The compact modular seal design makes it possible to switch between systems at a later date.
- 3 Back-Pullout-Unit (BPU) - housing remains connected to the pipework, while the rest of the unit can be withdrawn for maintenance purposes.
- 4 Optimised and coordinated impeller and casing geometry for maximum efficiency and lowest NPSH values.

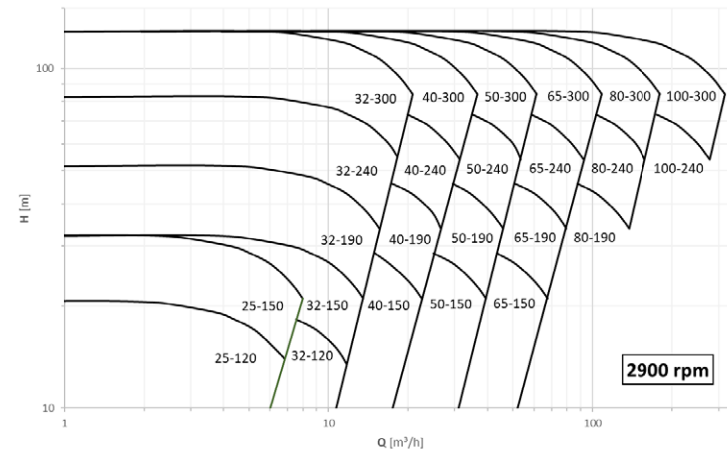


Single-acting mechanical seal



Double-acting mechanical seal





Oils



Milk



Juices & Smoothies



Wine



Beer



Pharmacy

PROFITABILITY | INNOVATION | CUSTOMER SATISFACTION
HIGHEST QUALITY | PERFORMANCE | PERFECTION



Feldmühlenweg 6-10
D-49593 Bersenbrück
info@pump-products.de
www.pump-products.de

+49 (0) 54 39 - 80 921-0
internationalpumpproducts